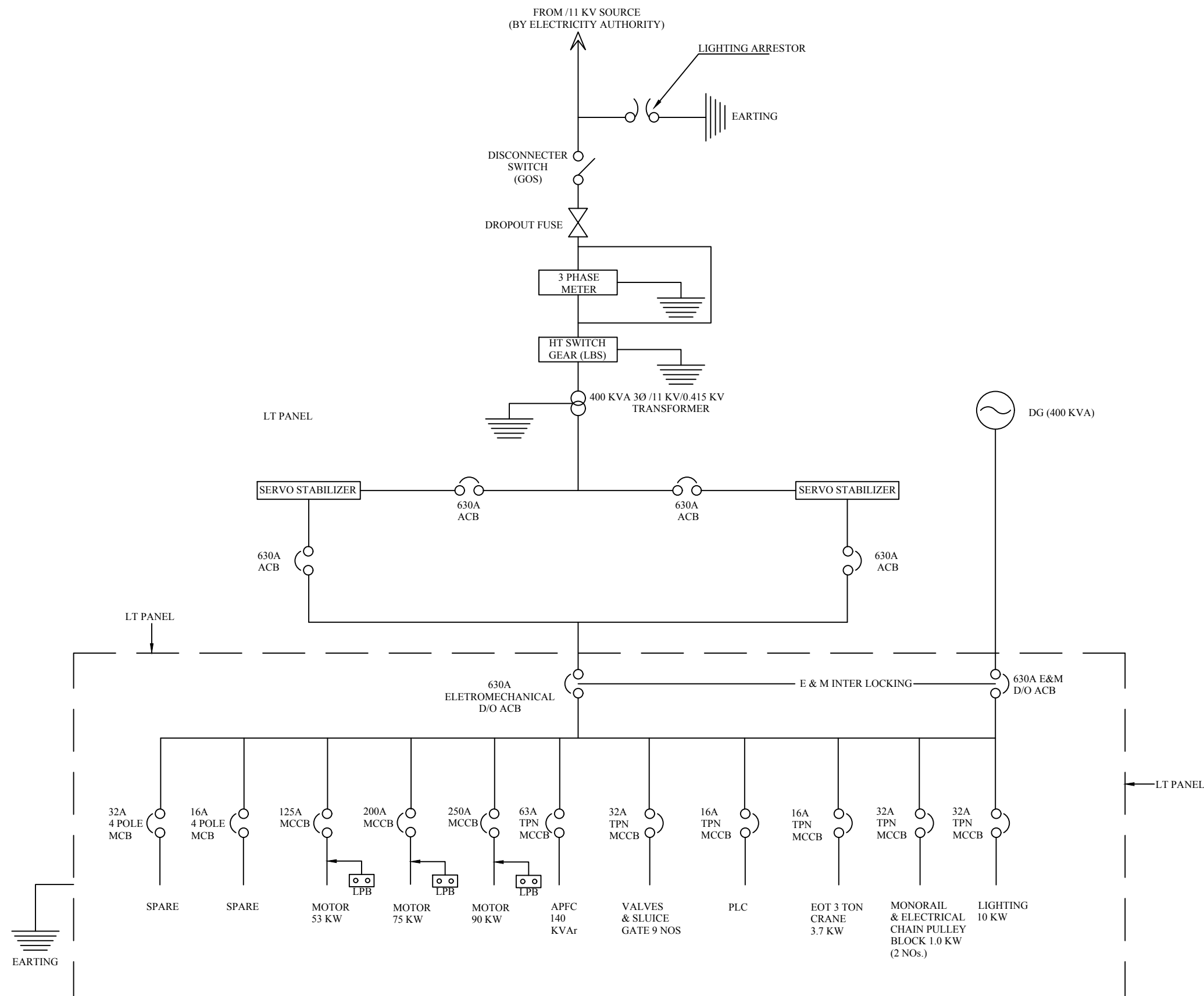



**TENTATIVE SINGLE LINE DIAGRAM WITH REQUIRED DETAILS**



NOTE : - ALL ACB & MCCB MUST HAVE A FAULT LEVEL RATING OF 10 KV (MINIMUM)  
ALL INCOMING ACB & MCCB SHALL BE PROVIDED WITH UNDER VOLTAGE RELEASE.  
TOTAL 11 OUTGOING PANEL

NOTES:-  
1. ALL DIMENSIONS ARE IN m. UNLESS OTHERWISE SPECIFIED.

DEPTT	PMU JTFRP		
PROJECT	STORM WATER DRAINAGE SCHEME,BONPURA & PADSHAHI BAGH, ZONE-1, SRINAGAR, (J&K)		
TITLE <b>SINGLE LINE DIAGRAM FOR MPS</b>		 <b>WAPCOS LIMITED</b>	
DWG. NO. -WAPCOS/SL/01	DATE:- 01.05.2019	REVISION : - R1	